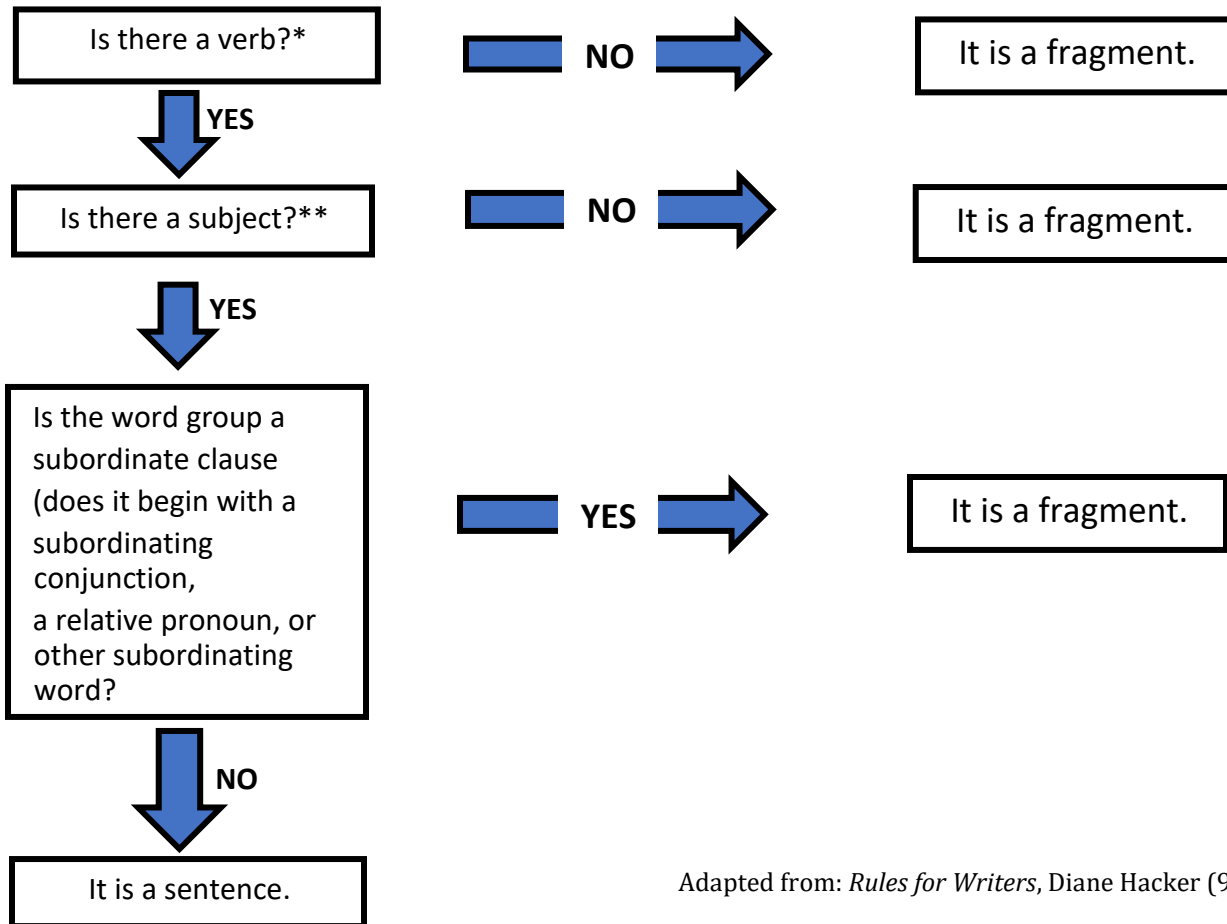


Fragments



at The Academic Resource Center
508-588-9100 x1801
writingcenter@massasoit.mass.edu

A fragment is a word group that **does not** make a complete sentence. It is missing a subject or verb, or it is a subordinate clause (a word group that contains a subject and a verb but does not make a complete sentence because it functions as an adjective, adverb, or noun).



Adapted from: *Rules for Writers*, Diane Hacker (9th ed)

*Watch out for verbals (gerunds, participles, infinitives); they are verb forms—such as “walking” or “to act”—that do not function as a verb of a clause.

**The subject of a sentence may be *you*, understood.

Some writers find that a good way to locate fragments is to read their work out loud. Some writers will even read their sentences out of order so that fragments do not get lost in the context of adjacent sentences.

To fix a fragment, add the needed subject or verb, or attach it to an adjoining sentence.