

Renovations for Science, Nursing & Respiratory Programs



BUILDING EXPERIENCE AGENDA

01

Foundation

02

**Universal
Design Goals**

03

**Floor Plan
Updates**

04

**Exterior
Wayfinding**

05

**Interior
Wayfinding**

FOUNDATION

01

02

03

04

05

1. **Mission Statement**
2. **Proejct Schedule Update**

Foundation

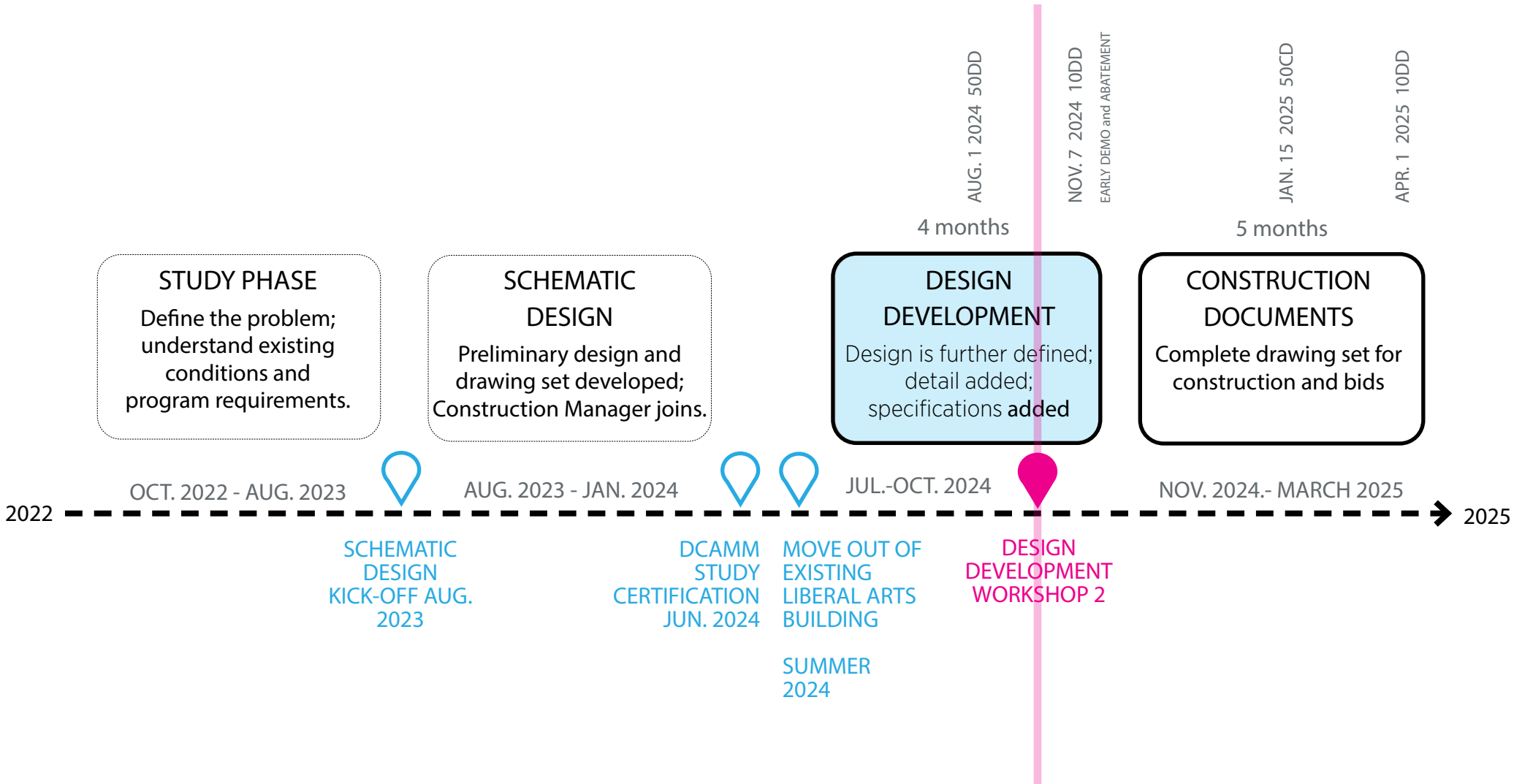
Mission Statement

Design an inclusive space for the Respiratory+Nursing and Science+Math programs that is forward-thinking, highly flexible, and unique to Massasoit Community College.



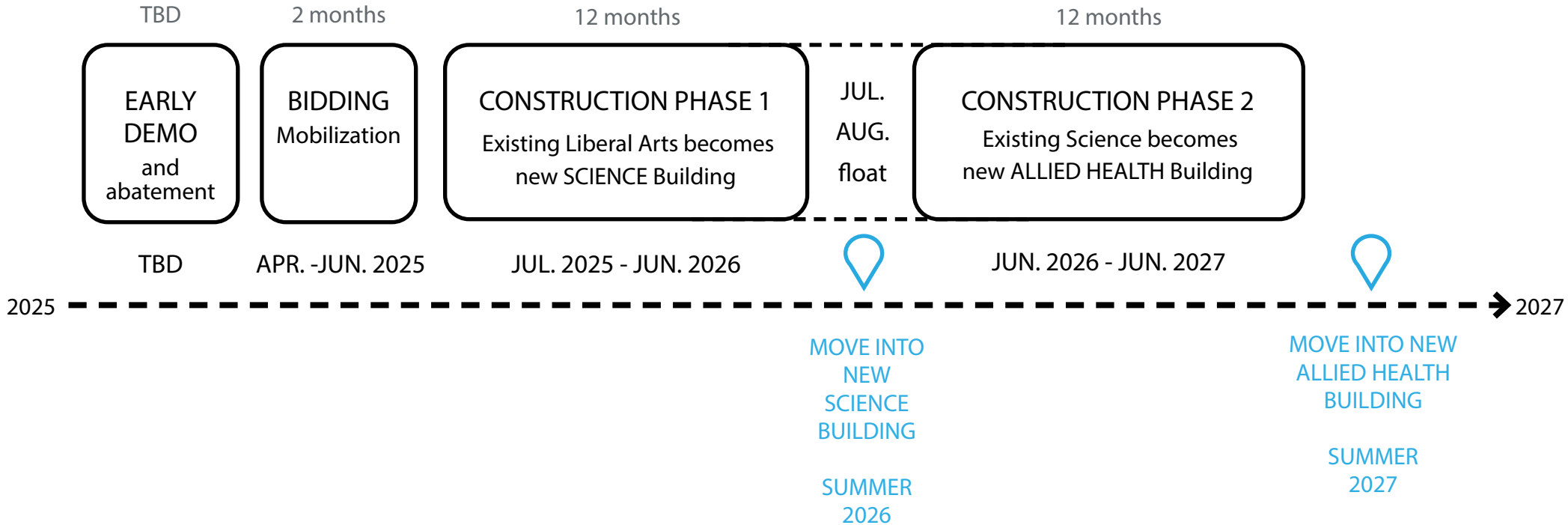
PROJECT SCHEDULE

Study and Design Schedule



PROJECT SCHEDULE

Milestone Construction Schedule



UNIVERSAL DESIGN GOALS

01

02

03

04

05

1. Overall Universal Design (UD) Principles
2. Project-specific UD goals

OUR UNIVERSAL DESIGN PRINCIPLES

A BASIS FOR DESIGN

Universal Design aims to design for **everyone**, regardless of ability, neurodiversity, age, gender, sexuality, race and ethnicity. For Massasoit Community College, the design of public spaces aims to center these principles:

1. Accessibility + Inclusion
2. Equity
3. Comfort + Safety
4. Designated Use Cases + Flexibility

* Reference: "Human Rights Careers: What Is Inclusive Architecture?"

PROJECT-SPECIFIC UNIVERSAL DESIGN GOALS

FOR FURTHER DISCUSSION

#1

Improve **wayfinding** and visibility of **entrances and campus circulation** paths.

#2

Increase quantity and types of **public spaces**.

#3

Provide building support spaces that promote **well-being**, safety and security.

#4

Increase **natural light and views** into and out of the buildings at strategic locations.

#5

Use **materials** responsive and supportive of cognitive, acoustic, and behavioral sensitivities.

#6

Prioritize **social Inclusion** of all users, especially those with varied needs.

#7

Uphold **representation** that is indicative of the end user and the MCC campus community.

PROJECT-SPECIFIC UNIVERSAL DESIGN GOALS

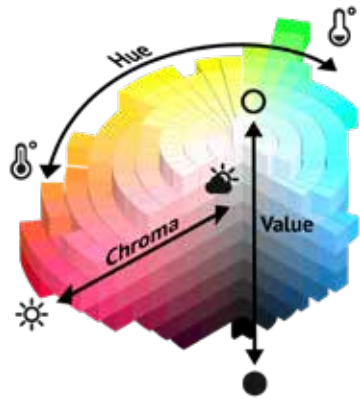
COLOR STUDIES

COLOR THEORY

HUE: THE COLOR ITSELF, SUCH AS RED, YELLOW, OR BLUE.

VALUE: THE LIGHTNESS OR DARKNESS OF THE COLOR, OR HOW MUCH LIGHT IT CONTAINS.

CHROMA: THE PURITY OR SATURATION OF THE COLOR, OR HOW STRONG IT IS.



COLOR-DEFICIENT VISION

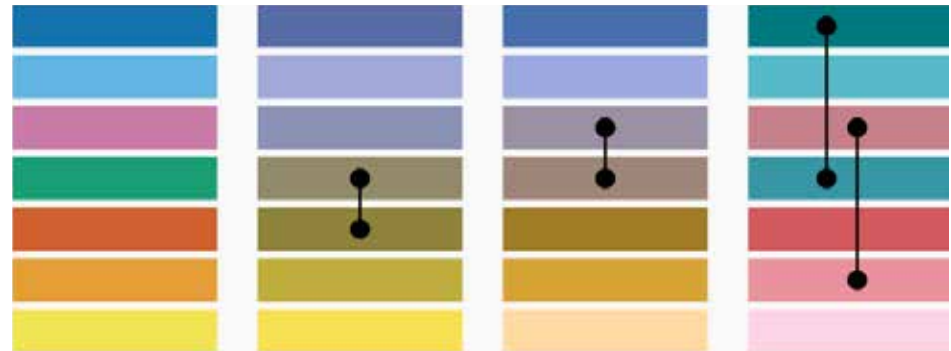
MASATAKA OKABE+KEI ITO'S COLOR UNIV. DESIGN (CUD) PALETTE:

FULL COLOR
SPECTRUM VISION

PROTANOPIA
RED-BLIND

DEUTERANOPIA
GREEN-BLIND

TRITANOPIA
BLUE-BLIND



COLOR IDENTITY



PROJECT-SPECIFIC UNIVERSAL DESIGN GOALS

COLOR THEORY AND PSYCHOLOGY

COLOR PSYCHOLOGY



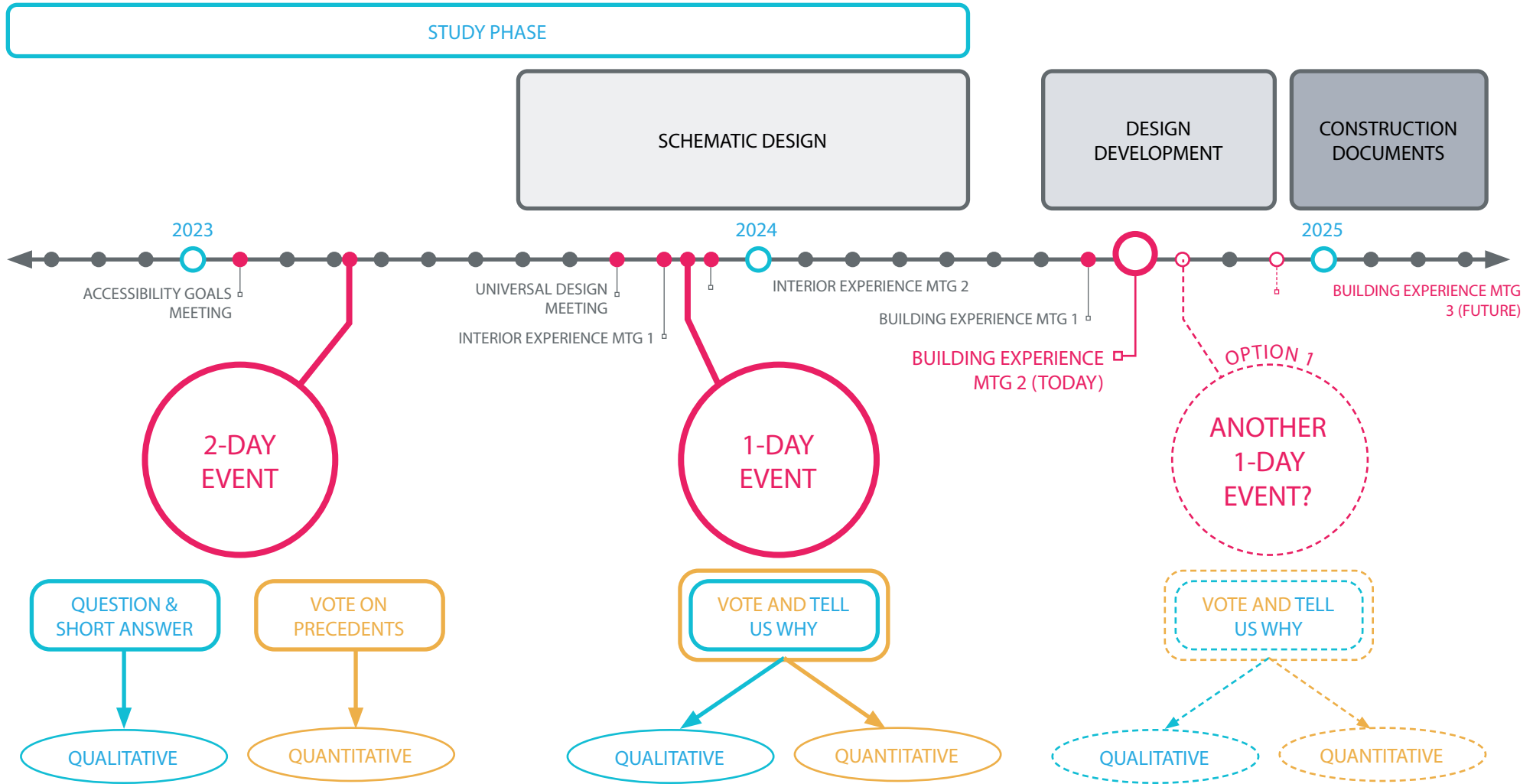
Color Psychology - ENERGY • CREATIVITY • OPTIMISM • EXCITEMENT
WARM TONES CAN STIMULATE ENERGY, FOCUS, AND COGNITIVE ENGAGEMENT.



Color Psychology - CALM • STABILITY • BALANCE • SAFETY
COOL TONES CAN PRODUCE FEELINGS OF TRANQUILITY, ALLEVIATE STRESS, REDUCE ANXIETY.

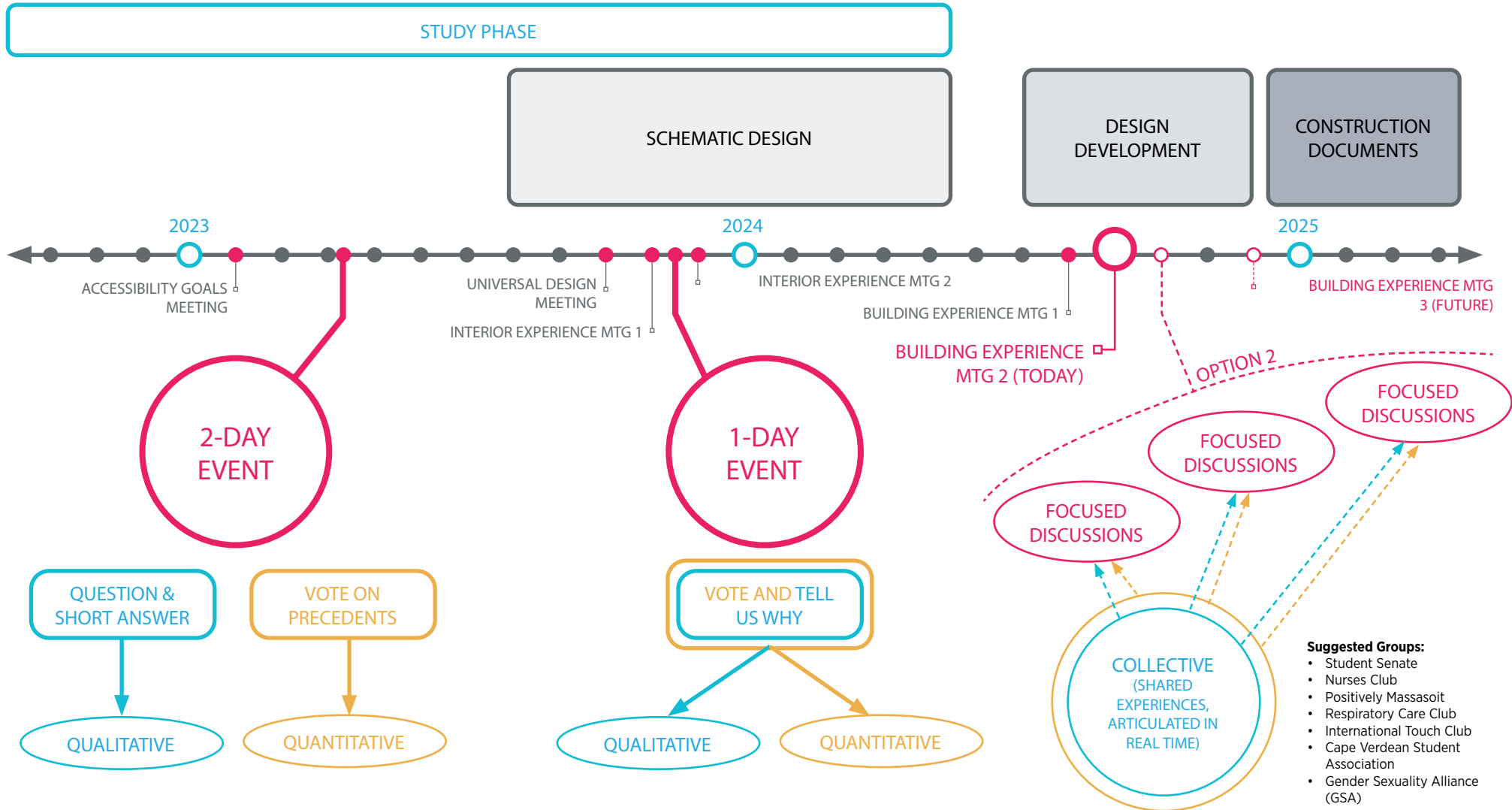
COMMUNITY ENGAGEMENT

BRAINSTORMING NEXT STEPS



COMMUNITY ENGAGEMENT

BRAINSTORMING NEXT STEPS



FLOOR PLAN UPDATES

01

02

03

04

05

1. **Science Plan**
2. **Allied Health Plan**

FLOOR PLANS

NEW SCIENCE BUILDING PLAN



FLOOR PLANS

NEW ALLIED HEALTH BUILDING PLAN



EXTERIOR WAYFINDING & SIGNAGE

01

02

03

04

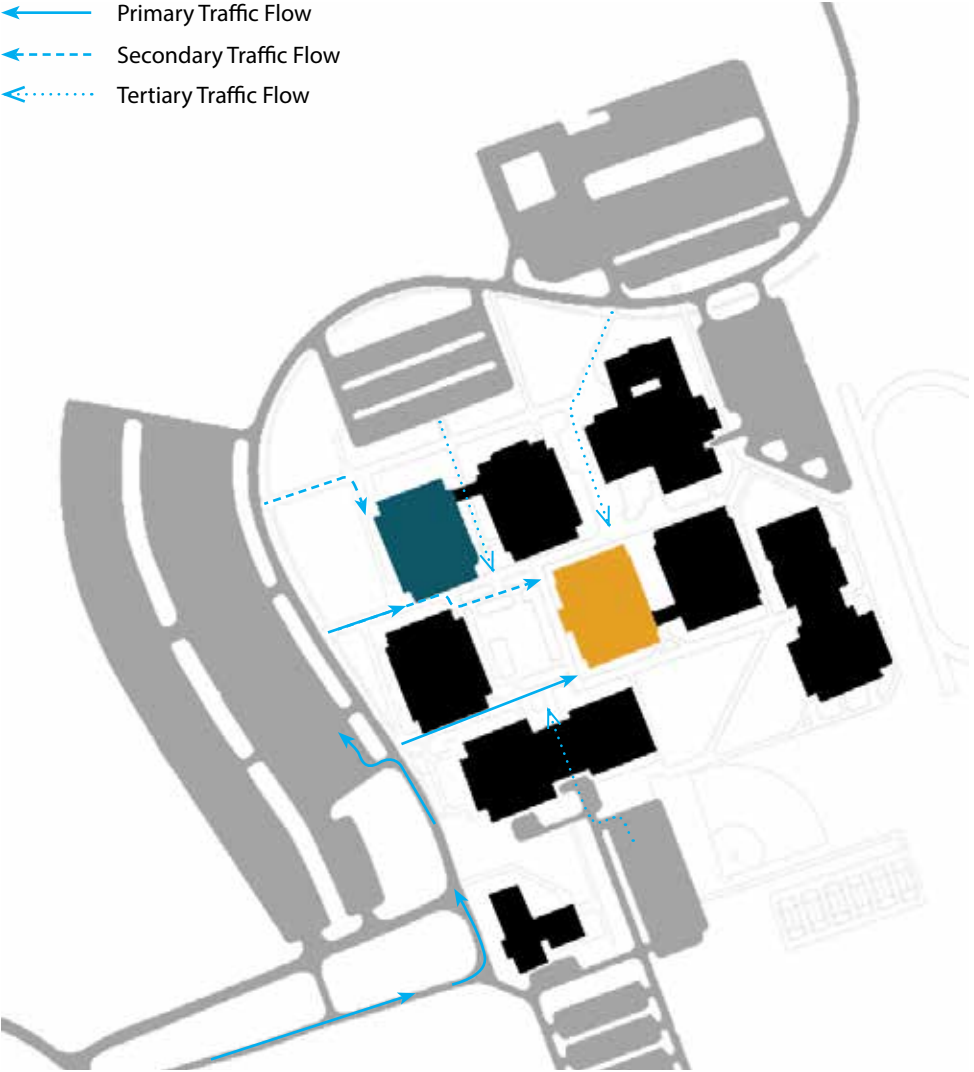
05

- 1. Exterior Circulation & Entry Recap**
- 2. Exterior Materials & Signage Options**
- 3. Street View Studies**
- 4. Comprehensive Options for all Building Entries**

SITE TRAFFIC DIAGRAMS

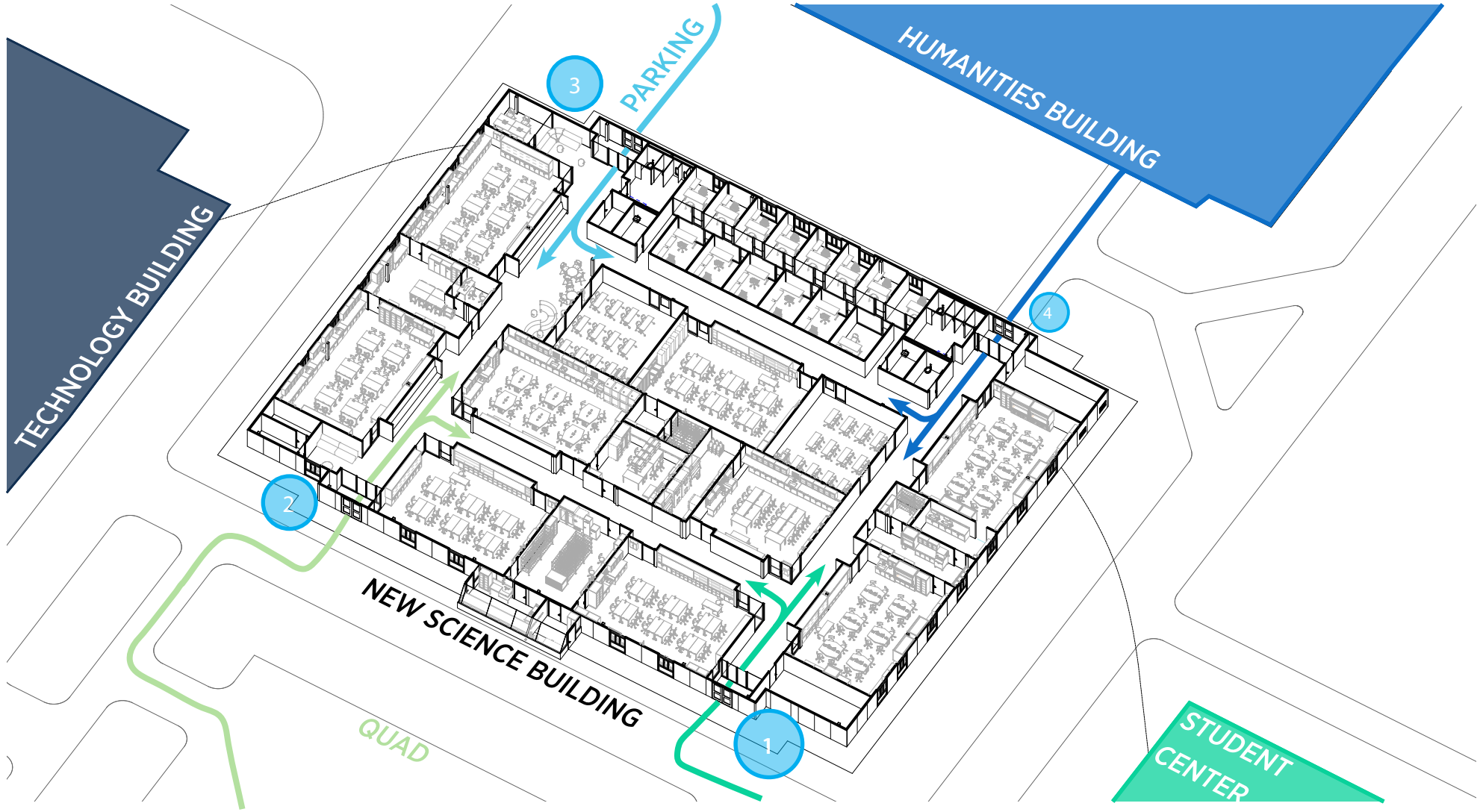
NEW SCIENCE & ALLIED HEALTH BUILDINGS

- ← Primary Traffic Flow
- ← Secondary Traffic Flow
- ← Tertiary Traffic Flow



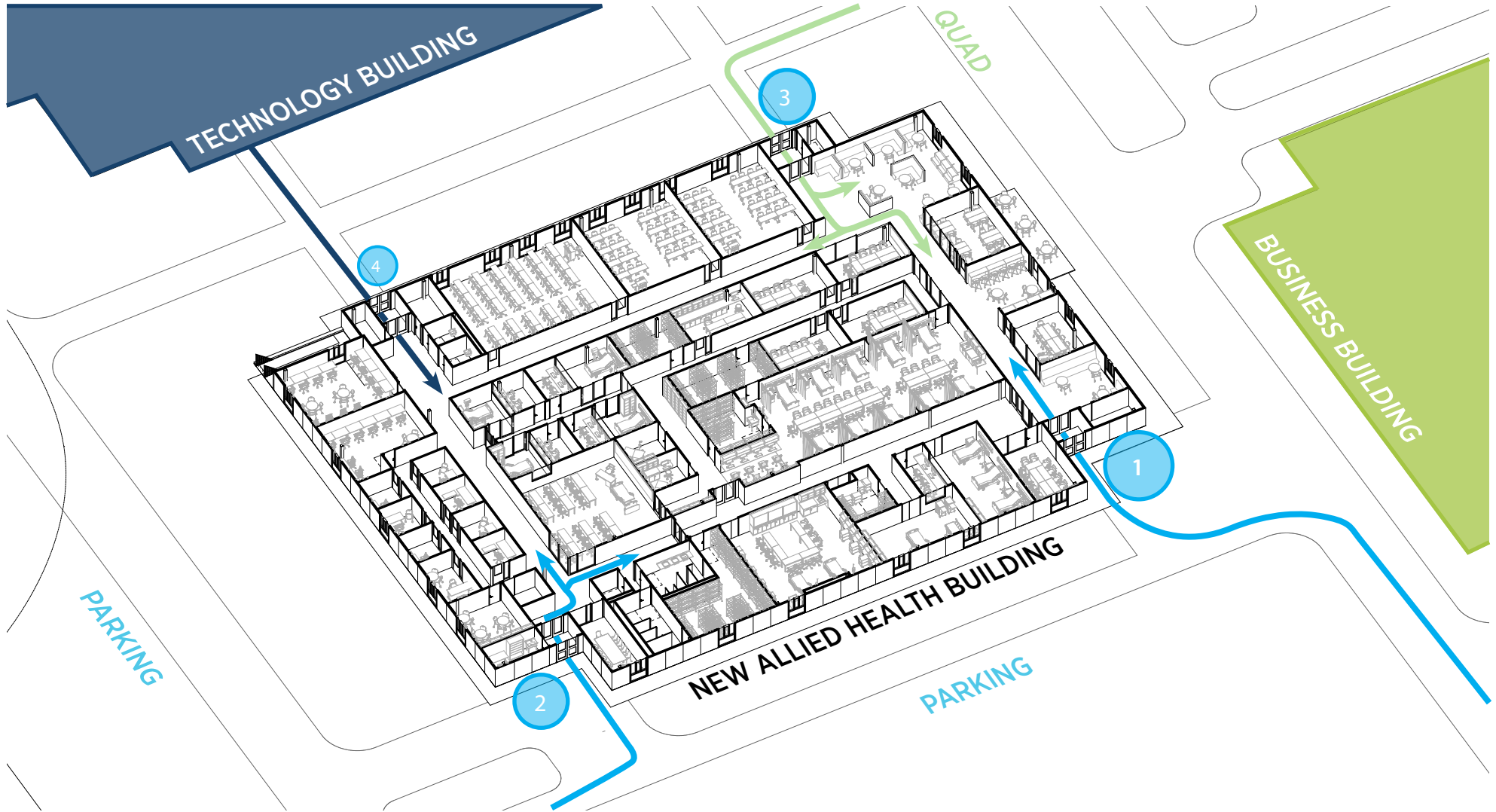
CIRCULATION DIAGRAM

NEW SCIENCE BUILDING



ENTRY DIAGRAM

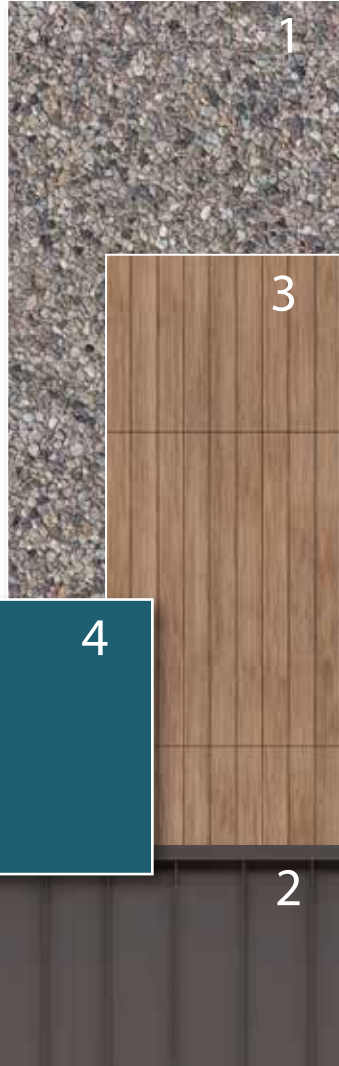
NEW ALLIED HEALTH BUILDING



BUILDING ENTRY SIGNAGE & MATERIALS

NEW ALLIED HEALTH BUILDING

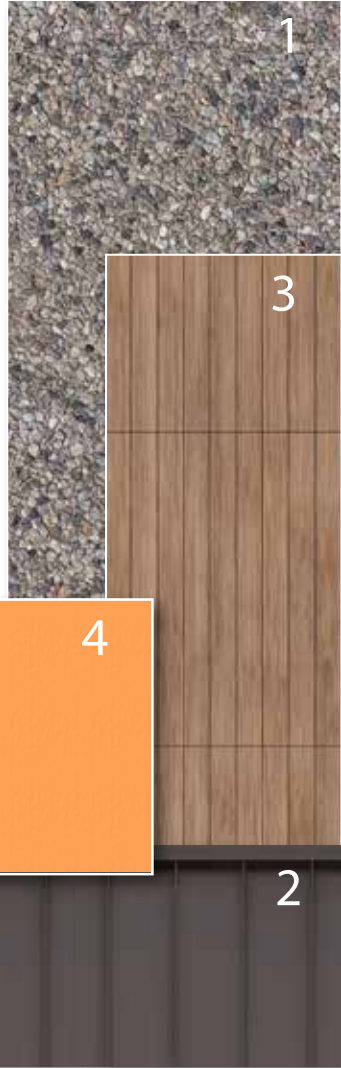
1. EXISTING PRE-CAST CONCRETE PANEL
2. ANODIZED BRONZE STANDING SEAM METAL ROOF
3. WOOD-LOOK SOFFIT
4. COLORFUL FIBER-CEMENT INFILL PANELS



BUILDING ENTRY SIGNAGE & MATERIALS

NEW SCIENCE BUILDING

1. EXISTING PRE-CAST CONCRETE PANEL
2. ANODIZED BRONZE STANDING SEAM METAL ROOF
3. WOOD-LOOK SOFFIT
4. COLORFUL FIBER-CEMENT INFILL PANELS



BUILDING ENTRY SIGNAGE

ALLIED HEALTH - SIGNAGE TYPE OPTIONS



OPTION 1 - SUPER-GRAPHIC SIGN



OPTION 2 - FASCIA-MOUNTED SIGN

BUILDING ENTRY SIGNAGE

SCIENCE - SIGNAGE TYPE OPTIONS



OPTION 1 - SUPER-GRAPHIC SIGN



OPTION 2 - FASCIA-MOUNTED SIGN

BUILDING ENTRY SIGNAGE

ALLIED HEALTH - PROPOSED SIGNAGE OPTIONS



OPTION 1 - PROPOSED MAIN ENTRY SIGNAGE



OPTION 1 - NORTHWEST ENTRY SIGNAGE



BUILDING ENTRY SIGNAGE

ALLIED HEALTH - PROPOSED SIGNAGE OPTIONS

3



OPTION 1 - SOUTHEAST ENTRY SIGNAGE



4



OPTION 1 - NORTHEAST WALKWAY SIGNAGE



BUILDING ENTRY SIGNAGE

ALLIED HEALTH - PROPOSED SIGNAGE OPTIONS

1



OPTION 2 - PROPOSED MAIN ENTRY SIGNAGE

2



OPTION 2 - NORTHWEST ENTRY SIGNAGE



BUILDING ENTRY SIGNAGE

ALLIED HEALTH - PROPOSED SIGNAGE OPTIONS

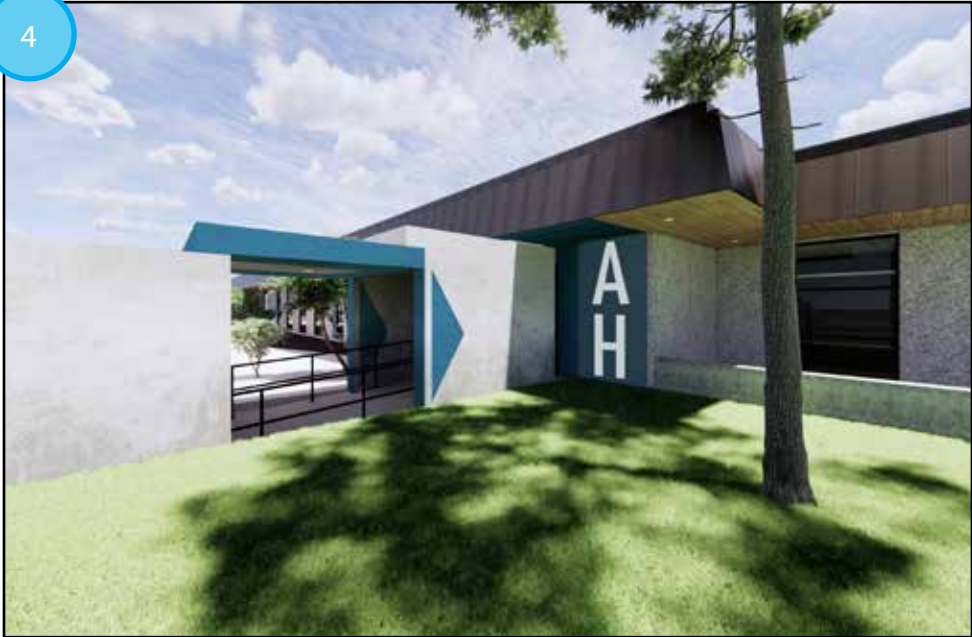
3



OPTION 2 - SOUTHEAST ENTRY SIGNAGE



4



OPTION 2 - NORTHEAST WALKWAY SIGNAGE



BUILDING ENTRY SIGNAGE

SCIENCE - PROPOSED SIGNAGE OPTIONS

1



OPTION 1 - MAIN ENTRY SIGNAGE

2



OPTION 1 - NORTHWEST ENTRY SIGNAGE



BUILDING ENTRY SIGNAGE

SCIENCE - PROPOSED SIGNAGE OPTIONS

3



OPTION 1 - NORTHEAST ENTRY SIGNAGE

4



OPTION 1 - SOUTHEAST WALKWAY SIGNAGE



BUILDING ENTRY SIGNAGE

SCIENCE - PROPOSED SIGNAGE OPTIONS

1



2



OPTION 2 - MAIN ENTRY SIGNAGE

OPTION 2 - NORTHWEST ENTRY SIGNAGE



BUILDING ENTRY SIGNAGE

SCIENCE - PROPOSED SIGNAGE OPTIONS

3



OPTION 2 - NORTHEAST ENTRY SIGNAGE



4



OPTION 2 - SOUTHEAST WALKWAY SIGNAGE



BUILDING EXTERIOR MATERIALS

BUILDING ELEVATIONS



SCIENCE BUILDING - SOUTH ELEVATION



ALLIED HEALTH BUILDING - NORTH ELEVATION

- **COLOR AS CAMPUS WAYFINDING TOOL**
- **ALL ELEVATIONS OFFER A PROGRAM IDENTIFYING COLORFUL INFILL PANEL**
- **COLOR TO WRAP UNDERSIDE OF SOFFIT TO MAXIMIZE VIEWPOINTS**

INTERIOR WAYFINDING

01

02

03

04

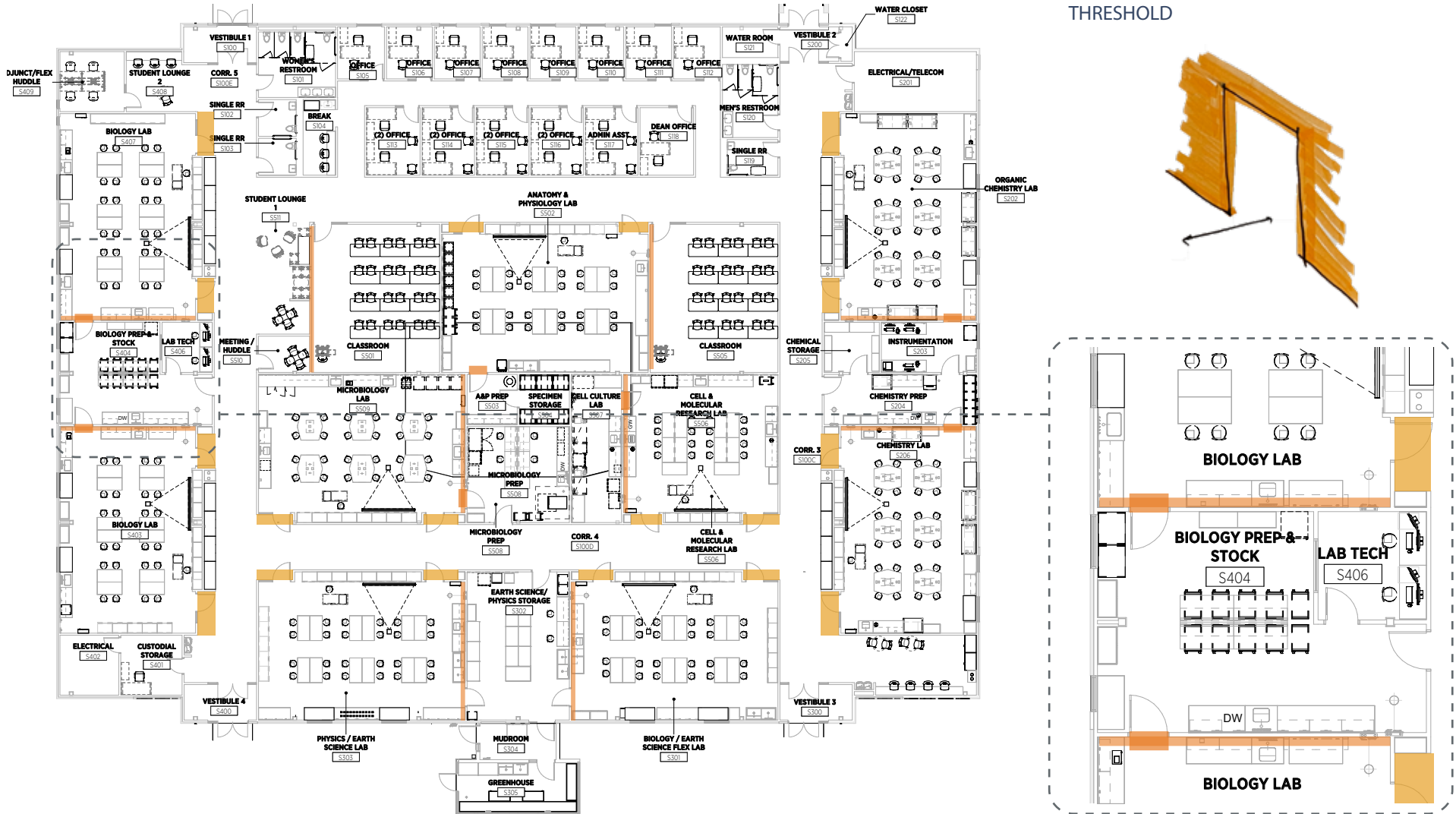
05

1. Interior - Exterior Connection
2. Spatial Wayfinding Schemes

SLA SLIDES

SCIENCE BUILDING

LABS AND CLASSROOMS COLOR STRATEGY / PLAN CONCEPT



SCIENCE & ALLIED HEALTH BUILDING

PRECEDENTS / CLASSROOMS



SCIENCE CLASSROOMS

COLOR & MATERIAL PALETTE

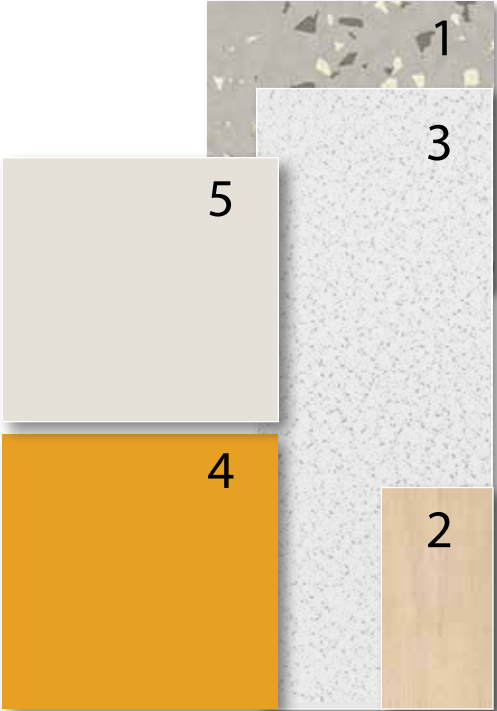


OPTION 1



OPTION 2

- 1. RUBBER FLOOR
- 2. WOOD DOORS
- 3. ACOUSTIC CEILING
- 4. ACCENT COLOR
- 5. NEUTRAL WALL COLOR



SCIENCE BUILDING

PRECEDENTS / LABS & PREP



SCIENCE BUILDING

PRECEDENTS / CASEWORK AND FURNITURE



SCIENCE LABS

MATERIAL & COLOR PALETTE



OPTION 1



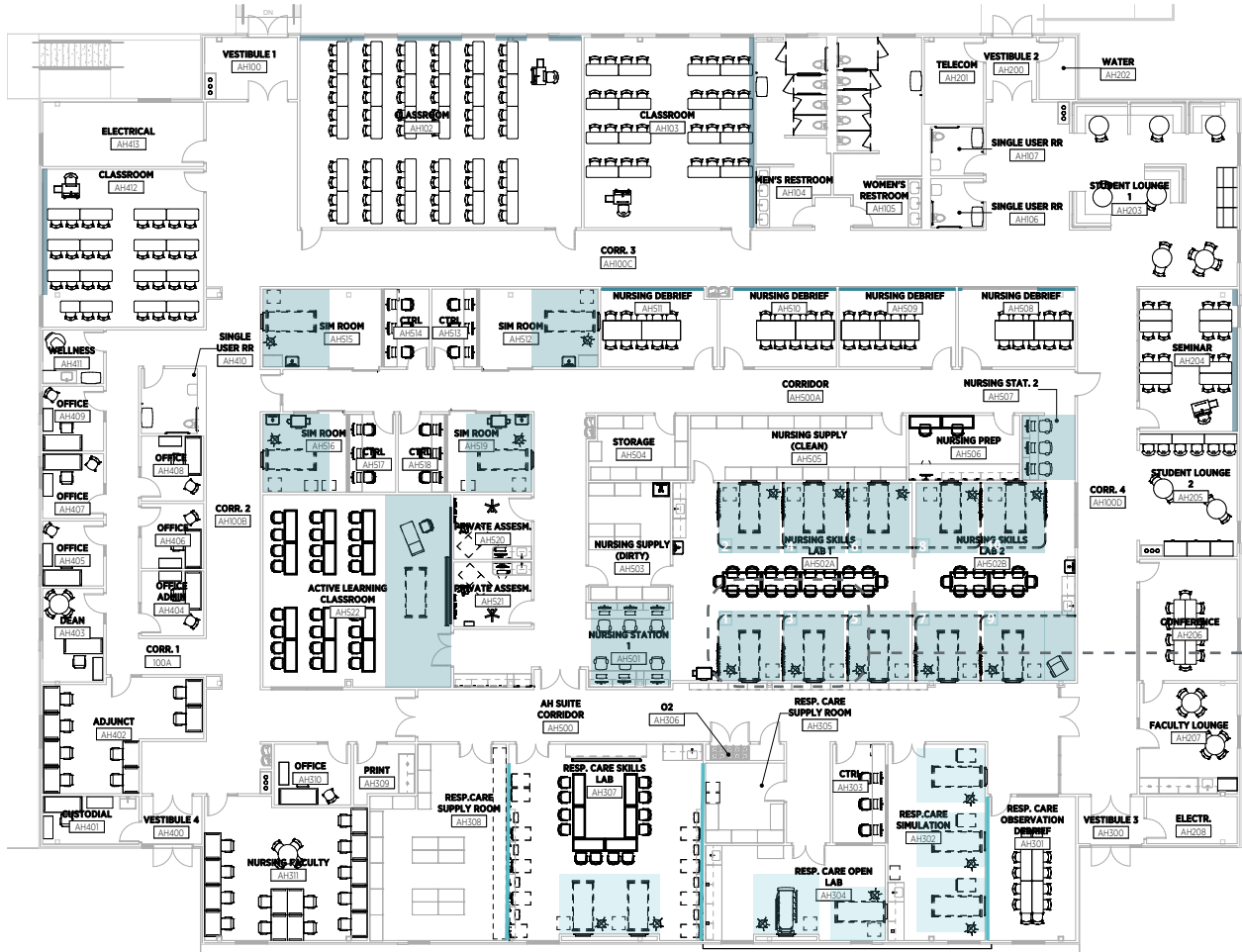
OPTION 2

- 1. RUBBER FLOOR
- 2. WOOD DOORS
- 3. ACOUSTIC CEILING
- 4. ACCENT COLOR
- 5. NEUTRAL WALL COLOR
- 6. CASEWORK

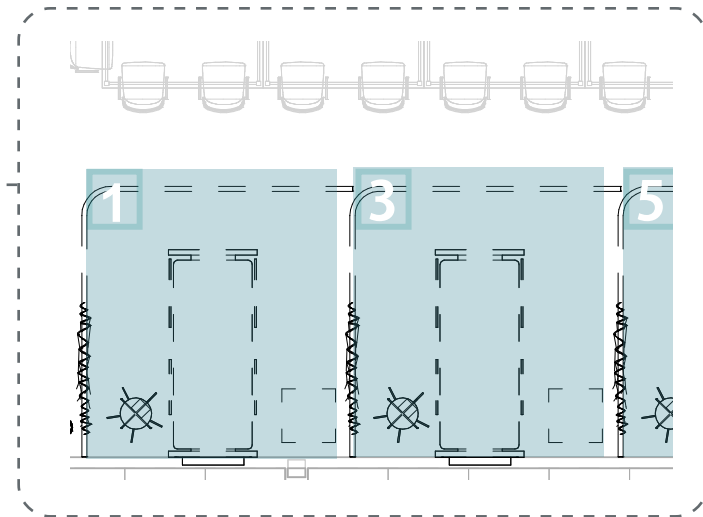
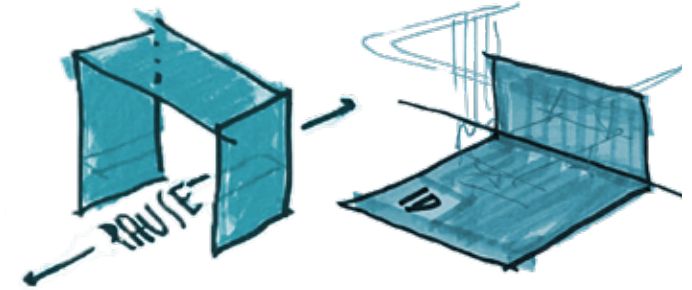


ALLIED HEALTH BUILDING

COLOR STRATEGY / PLAN CONCEPT



DESTINATION



ALLIED HEALTH BUILDING

PRECEDENTS / LABS

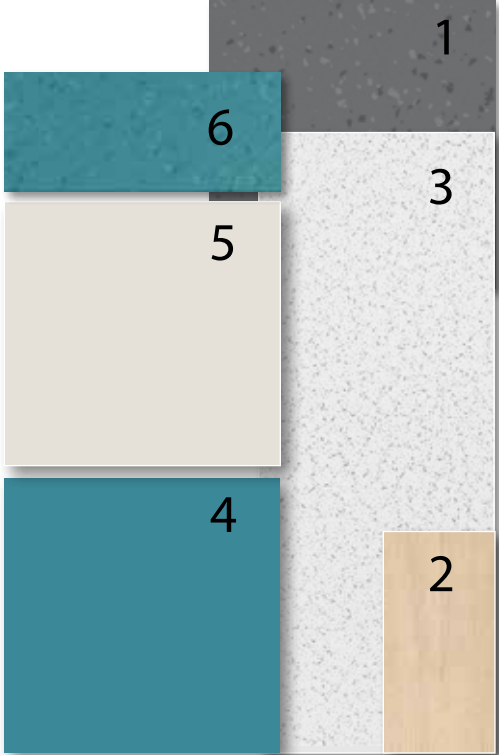


ALLIED HEALTH - NURSING SKILLS LAB

MATERIAL & COLOR PALETTE



- 1. RUBBER FLOOR
- 2. WOOD DOORS
- 3. ACOUSTIC CEILING
- 4. ACCENT COLOR
- 5. NEUTRAL WALL COLOR
- 6. RUBBER FLOOR ACCENT



ALLIED HEALTH - RESPIRATORY SKILLS LAB

MATERIAL & COLOR PALETTE



OPTION 1



OPTION 2

- 1. RUBBER FLOOR
- 2. WOOD DOORS
- 3. ACOUSTIC CEILING
- 4. ACCENT COLOR
- 5. NEUTRAL WALL COLOR
- 6. RUBBER FLOOR ACCENT

